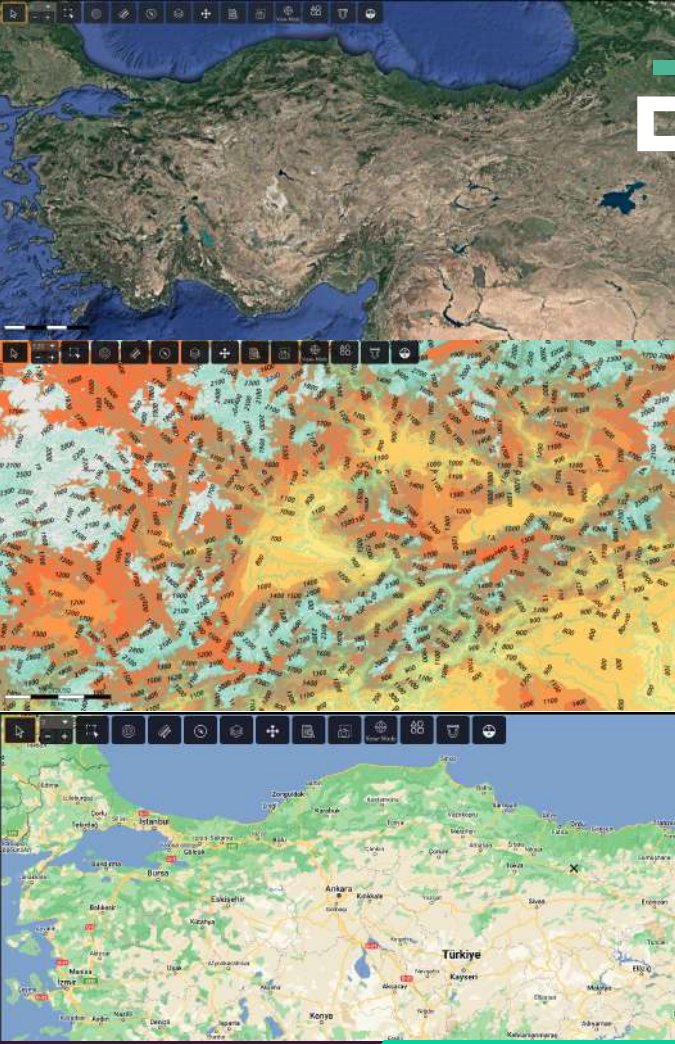


ESEN



WISE 23

ISR MISSION MANAGEMENT AND DATA FUSION SYSTEM

Wise 23

Wise 23 is an advanced Moving Map, Situational Awareness, and Mission Management system, engineered for high reliability and modularity. It offers seamless integration with diverse avionics architectures, sensor suites, and communication networks, ensuring optimal interoperability and mission effectiveness.



Key Features

Moving Map

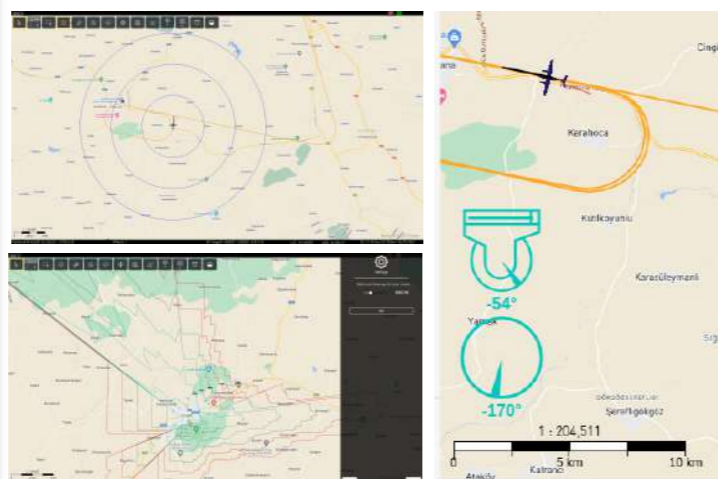
- Map Engine - displays raster, vector, terrain data and satellite images
- Database & Search Engine - different databases can be installed
- Overlays - display multiple maps and databases simultaneously
- Intuitive Human Machine Interface
- Open-source map engine architecture, easy new map layer integration with free map rendering tools.
- Multi-layer support, multiple maps can be used simultaneously
- Open source and up-to-date search database
- Basic patterns (circle, square, ellipse, polygon, line) is supported on map
- Distance measurement and range rings

Situational Awareness

- Terrain data support and obstacle warnings
- Data link coverage using terrain data
- Compass and attitude indicator
- Subsystem health status monitoring

Mission Management

- Dual head functionality - Two independent video outputs and controls
- Various Mission Tools & Controls
- Route and target planing
- Compatible with Wescam MX-15, MX-20, MX-25, FLIR HLD380, Argos 8
- Transmission of Either EO/IR video or map to ground or a tablet in cockpit
- Video records of each sensor from EO/IR camera for up to 20 hours



Advantages

- Easy sensor integration by mean of distributed software architecture
- Open-source search database and map engine
- Inter communication with air and ground segment over VOIP (Voice and message)
- Redundant Dual Video/ Map Display
- Video/map transmission to ground and cockpit
- Enhanced tactical features
- Compatible with is common EO/IR camera
- Recording of each EO/IR's sensor up to 20 hours by mean of internal video capture and compressor hardware



Features

- Indigenous Mission Management System
- Open Architecture, Scalable, Modular
- Moving Map, Topographical, Road and Street Map
- Sensor Controls and Data Integration (EO/IR, WAS, SAR, ESM, TDL, IFF, AIS)
- Video Display, Record, and Replay
- Video moving target detection and tracking
- Target Image in Tactical Picture

Technical Specifications

General Data

Model Name	Systel rm2000ESN-01 rugged 2U rackmount server
Weight	12 kg
Dimensions	88 (H) x 482 (W) x 508 (D) mm
Operating Voltage Input	28 VDC (nominal) 550 W
Mounting Attitude	Horizontal
Memory	64 GB DDR4 3200 ECC RDIMM Memory
Storage	1 TB Samsung 870 EVO STAI1 2.5''SDD (Front Removable)
GPU	PNY NVIDIA T1000 4GB GDDR6 GPU (4x mDP, 4x miniDP to DP adapters included)
Video Capture Card	Blackmagic Design Decklink 8K Pro Capture Card
Processor	Intel® Xeon® Silver 4209T Processor 11M Cache, 2.20 GHz (8 Cores,maximum CPU load is 35% while all functionality of Wise 23 is used)

Electrical and Video Interface

- 2 Gigabit Ethernet LAN, (2) USB 2.0, 4 miniDisplay Port , 1 Vga Port
- 6 RS232/RS422/RS485 configurable interfaces
- 3 SDI Video inputs and 1 NTSC/PAL Analog Video Input

Environmental Specifications

Operating Temperature	0° to 50° C
Humidity Specification	5% to 95% Non-Condensing
Vibration Requirements	At a minimum, the chassis is designed to meet the vibration requirements of MIL-STD-810G, Method 514.6,Procedure 1, Annex C, Category 4. For Operating: See Fig. 514.6C-1 & For Non-Operating: See Fig. 514.6C-2

WISE 23

ISR MISSION MANAGEMENT AND DATA FUSION
SYSTEM

ESEN

Titanyum C Blok Kat:2 ODTÜ Teknokent
06800, Çankaya, Ankara/ Türkiye

T: (+90) 312 220 14 88
F: (+90) 312 220 14 89

www.esensi.com.tr

